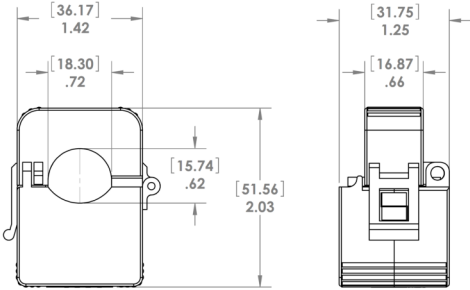


CURRENT TRANSFORMER

CTA1 SERIES

Enclosed Self-Powered Split Core 25, 50, and 100 Amp Current Transformers with 333 mV Output



SPECIFICATIONS

Environment	Indoor Use Only 5 to 176° F (-15 to 80°C) 90% relative humidity
Wires	6', 18 AWG 600V Rated
Primary Input (A)	100A max. AC 50/60 Hz
Secondary Output (V)	0.333 Vac
Accuracy	0.5% (typical)
Linearity	10%-120%
Polarity	White-Hi, Black-Low
Frequency Range	40-400 Hz
Max Sense Voltage	600 Vac
Approvals	ETL Listed, CE, RoHS

SELECTION GUIDE

Model #	Primary Input (A)	Secondary Output (V)	Ratio	Accuracy (%)
CT-025A1-333	25	0.333	25A/0.333V	0.8
CT-050A1-333	50	0.333	50A/0.333V	0.5
CT-100A1-333	100	0.333	100A/0.333V	0.5